



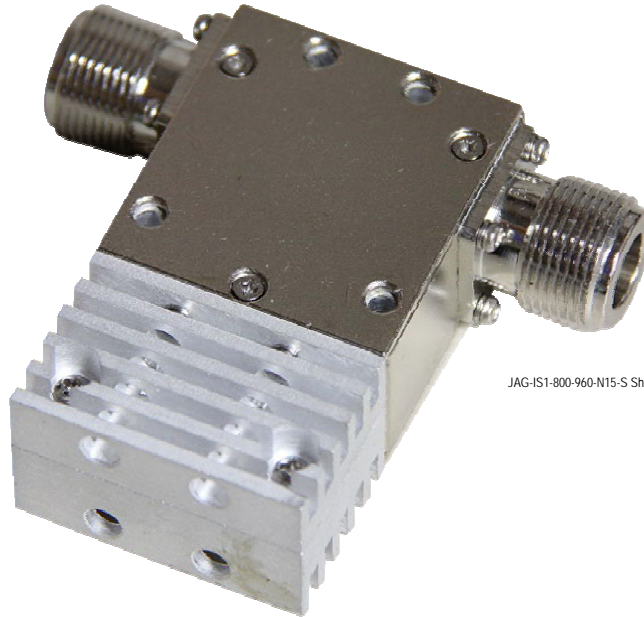
Electromagnetics
"Quality is everything."

ISLI Series
Single Stage Coaxial
Isolator
869-894 MHz

VHF
UHF



JAG-IS1-869-894-S10-X



JAG-IS1-800-960-N15-S Shown with standard load for illustration

* This is a general representation of what the actual product may look like.

JAG coaxial isolators offer excellent performance in a compact rugged package. Quality components ensure good isolation with low insertion loss over their full operating temperature range. These isolators come equipped with a variety of load terminations. JAG ISLI series coaxial isolators offer a broad selection of frequency ranges and bandwidth from 132MHz-18GHz and from 1% to full bandwidth. Applications of these isolators range from military to space to commercial and are available in high power versions with connector options from N type to SMA. Other options available are integral attenuators and custom designs.

| Electrical Specifications | | | Mechanical Specifications | | | Environmental | |
|-----------------------------------------|-----------------------|---------|---------------------------|-----------------------|---------------|---------------------------------------------------------------------------------------------------------------------------------------------------------------------------------------------------------------------------------------------------------------------------------------------------------------------------------------------------------------------------------------------------------------------------------------------------------------------------------------------------|-----------------------|
| Model | JAG-IS1-869-894-S10-X | | Model | JAG-IS1-869-894-S10-X | | Model | JAG-IS1-869-894-S10-X |
| Frequency Range (MHz) | 869-894 | *Note 1 | Height | inches (mm) | 2.36 (60) | Temperature Range | -30-degC to +75-degC |
| Bandwidth @ 1.25:1 VSWR or Better (MHz) | 25 | | Width | inches (mm) | 1.38 (35) | Notes: 1. Specify model number and exact frequency when ordering 2. Reverse power ratings for isolators are determined by load size with a maximum going up to 100W 3. Replace the X in the model number for optional loads as follows: <ul style="list-style-type: none"> • S = Standard load (default) • 15 = 15W load • 30 = 30W load • 60 = 60W load • 100 = 100W load Example: JAG-IS1-869-894-S10-15 (comes with a 15W load) | |
| Maximum Input VSWR | 1.25:1 | | Depth | inches (mm) | 0.787 (20) | | |
| Maximum FWD Input Power (Watts) | 150 | * | Weight | lb (kg) | 2 (0.91) | | |
| Maximum REV Input Power (Watts) | 100 | | Mounting Systems | 19-inch rack mount | | | |
| Maximum Insertion Loss (dB) | 0.35 | | | Cavity | | | |
| Minimum Isolation (dB) | 22 | *Note 2 | | Plate | | | |
| Nominal Impedance (Ω) | 50 | | Termination (default) | | SMA-f | | |
| Optional Load Sizes (Watts) | 15 | *Note 3 | Termination (optional) | | N-f(m)/ SMA-m | | |
| | 30 | *Note 3 | Case Code | | IC04 | | |
| | 60 | *Note 3 | | | | | |
| | 100 | *Note 3 | | | | | |

JAG-IS1-869-894-S10-X Product Specification Sheet.

Specifications are subject to change without notice. As a result, all information contained in the present datasheet is subject to confirmation at time of ordering.

Dated: September-17-2014

Issue: 1

Made in Canada

Rev091714.0

Page 1/1



RF EMI Engineering Technology
 26-1750 Creek Way
 Burlington, Ontario
 L7L 7E2 Canada

Email: info@jagelectromagnetics.com
 Web: www.jagelectromagnetics.com
 Tel (905)-635-7437
 Fax (905)-332-8093



Copyright © JAG Electromagnetics

JAG's dedication to continuous Research & Development will result in product improvements as they evolve.